

# ANDROID NAVIGATION INTERFACE



**INFINITI**®



**INFINITI**

2011 - 2013



**INFINITI QX56**



**INFINITI JX35**



**INFINITI FX35**



**INFINITI FX37**



**INFINITI FX50**



**INFINITI EX25**



**INFINITI**

2011 - 2013



**INFINITI EX35**



**INFINITI M25**



**INFINITI M37**



**INFINITI M56**



**INFINITI G25**



**INFINITI G37**



**INFINITI**

2014 - 2018



**INFINITI QX60**



**INFINITI QX70**



**INFINITI QX80**



**INFINITI Q70**



**INFINITI**



**INFINITI QX50**  
**2015-2017**



**INFINITI QX60**  
**2013**



**NISSAN PATROL**  
2012-2017



**NISSAN QUEST**  
2011-2017



**NISSAN 370Z**  
2013-2017

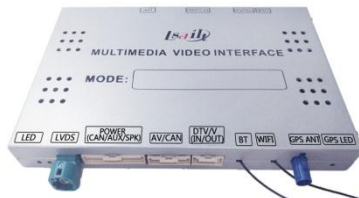


**NISSAN PATHFINDER**  
2013-2017

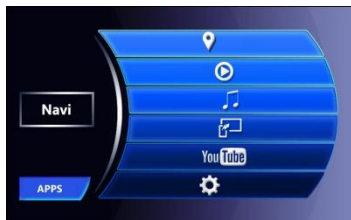


**NISSAN ARMADA**  
2013-2018

# SPECIFICATIONS



Unit Picture



UI Picture

## Android Configuration

<b>Resolution:</b>	800X480	<b>Display:</b>	LVDS Digital
<b>SYSTEM:</b>	Android OS6.0.1	<b>RAM:</b>	2GB
<b>ROM:</b>	16GB	<b>CPU MODEL:</b>	T3
<b>WIFI:</b>	Yes	<b>BT:</b>	Yes
<b>MirrorLink:</b>	Android and IOS 11	<b>Play Store:</b>	Yes
<b>Youtube:</b>	Yes	<b>Quad core</b>	1.2GHz

## Hardware Configuration

<b>TF Card :</b>	Maps (the product will not come with TF card)
<b>Android sound:</b>	Original car
<b>Navi Sound:</b>	Need to add small speakers
<b>AV IN:</b>	DTV and AV1
<b>V OUT:</b>	V and V1
<b>Camera:</b>	Front/Left/Rear/Right(guideline and radar )
<b>Use Operation :</b>	Touch/knob operation

# COMPATIBILITY



*Compatible FM UI*

- Nissan original head unit must be with **touchscreen**
- It has with **the same FM UI** (as shown in the above pictures)

# INCOMPATIBILITY



*Incompatible FM UI*

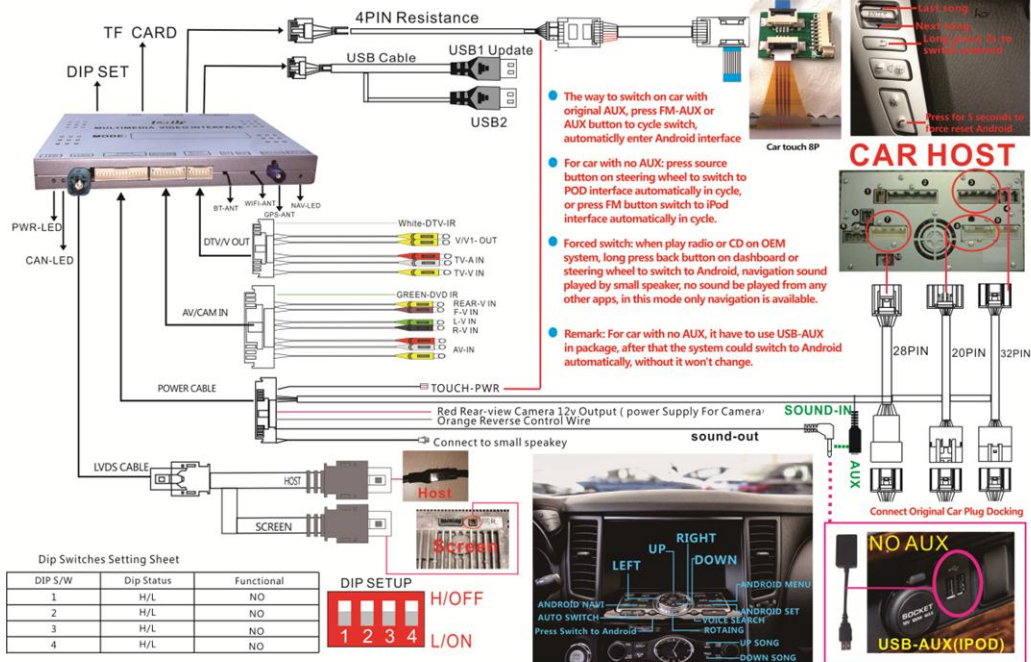
- Unit with **the same FM UI** (as shown in the above pictures), Android Navigation Interface Unit **cannot** be installed.

# INSTALLATION

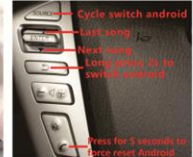
LLT-YF-VER5.9.3

## For Infiniti Nissan

Android Operating: Touch and Knob



- The way to switch on car with original AUX, press FM-AUX or AUX button to cycle switch, automatically enter Android interface
- For car with no AUX: press source button on steering wheel to switch to POD interface automatically in cycle, or press FM button switch to iPod interface automatically in cycle.
- Forced switch: when play radio or CD on OEM system, long press back button on dashboard or steering wheel to switch to Android, navigation sound played by small speaker, no sound be played from any other apps, in this mode only navigation is available.
- Remark: For car with no AUX, it have to use USB-AUX in package, after that the system could switch to Android automatically, without it won't change.



### CAR HOST



Dip Switches Setting Sheet

DIP S/W	Dip Status	Functional
1	H/L	NO
2	H/L	NO
3	H/L	NO
4	H/L	NO



**THANK YOU!**

**AL HASSANI AUTO ACCESSORIES TRADING L.L.C.**